

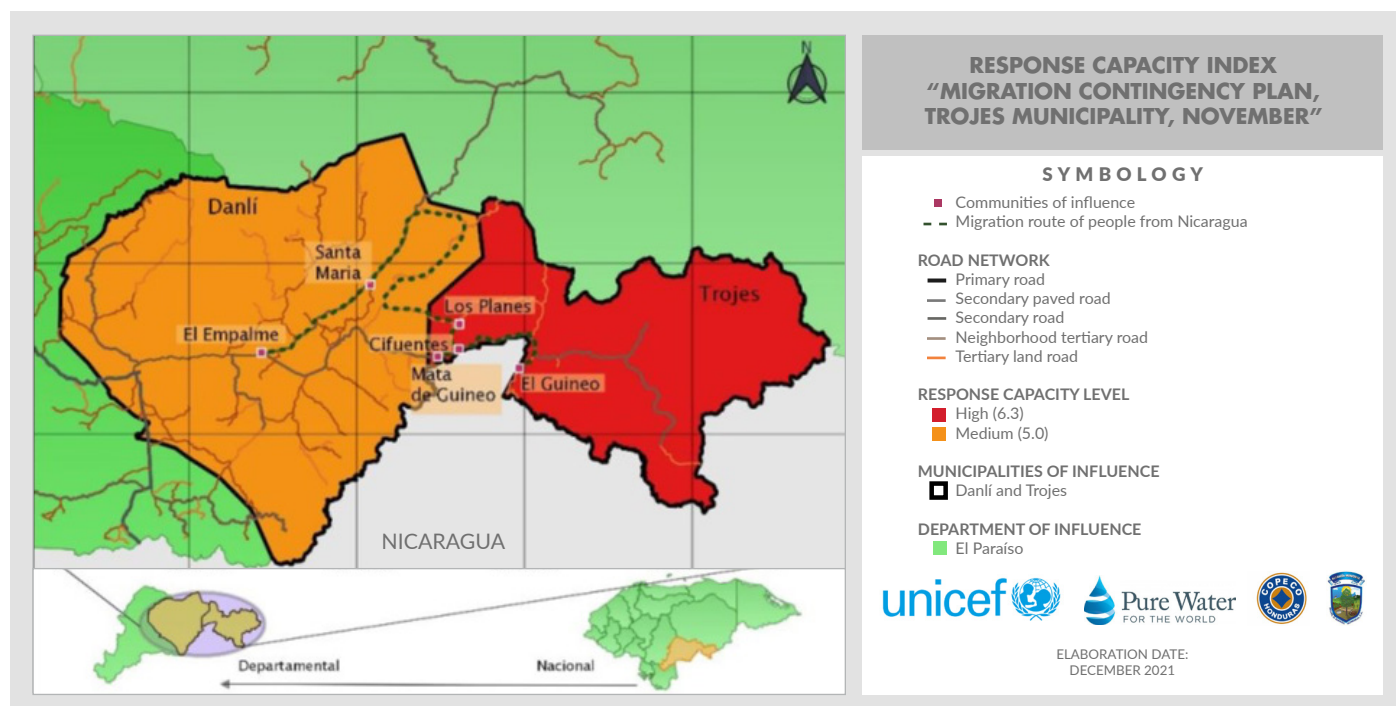
# EMERGENCY DECLARATION

## STATUS REPORT N° 1 - SOUTHERN BORDER, HONDURAS

<b>STATUS REPORT N°</b>	1
<b>EVENT</b>	SOUTHERN BORDER EMERGENCY DECLARATION, HONDURAS
<b>LOCATION</b>	Municipalities of Trojes and Danlí, El Paraíso department, Honduras
<b>COVERAGE TIME</b>	January, 1st to April, 15th, 2022
<b>DELIVERY DATE</b>	15/04/2022



## MAP



**16,214**  
PEOPLE AFFECTED

**9**  
NACIONALITIES

**4**  
SHELTER CENTERS

**55%**  
MEN

**30%**  
WOMEN

**15%**  
CHILDREN



# SITUATION ANALYSIS



**Thousands of migrants of at least nine nationalities are stranded in the municipalities of Trojes and Danlí**, in eastern border department of El Paraíso, due to the slow process of receiving payment of the US\$220 penalty they must pay for irregular entry into Honduran territory. The situation they are living is chaotic. After weeks of traveling on their migratory route to reach the border between Mexico and the United States, **Cubans, Venezuelans, Ecuadorians, Haitians, Angolans, Senegalese, Nicaraguans, Brazilians and Bangladeshis are stuck** waiting to pay the passage permit or get the money to do so.

Between January 1 and April 4, 2022, some 16.214 people had entered the country, 13.684 through the municipality of Trojes, on the southern border, according to data from Honduras's National Migration Institute (INM).



**Civil society organizations estimate that between 300 and 400 people enter daily.** According to last OCHA report, 2.300 migrants had entered through the southern border of Honduras in the second week of April. The INM reports the entry of 3.097 people so far in April.

The UN Resident Coordinator made a visit on March 24 to verify the situation in both municipalities, where local authorities have issued emergency declarations due to the massive arrival of migrants.



At the end of March, **civil society organizations requested the Honduran State to declare an emergency** in view of current migratory situation in the border area with Nicaragua, in order to guarantee an immediate response due to their extreme vulnerability.



**The migrants in transit** (among whom 55% are men, 30% women and 15% children of different ages) **require humanitarian attention such as food, lodging, medical attention, transportation, but so far, they have not received any response from the Honduran State**, only some churches, with support of international organizations, are providing assistance, but in some cases their capacities have already collapsed.



**There are high conditions of risk, threat, vulnerability and lack of capacity to respond** to the arrival of migrants, both in the municipality of Trojes and the municipality of Danlí (6.3 out of an average of 6.8 for Trojes and 5 out of 10 for Danlí, according to the INFORM risk index).



**There is not enough infrastructure to house the people who are entering the communities** and municipalities of El Paraíso department on a daily basis. In Trojes there is only one shelter with capacity for 140 people and in Danlí there are three active shelters (Colonia Las Colinas, Nueva Esperanza and Santa María) with a total capacity for 170 people.

## ACTION AGAINST HUNGER RESPONSE

At the beginning of April, Actions Against Hunger mobilized personnel to the areas affected by the growing migratory wave to gather preliminary **information through** visits to shelters, interviews with shelter coordinators, church leaders, interviews with Deputy Commissioner of the Permanent Contingency Commission (COPECO by its acronym in Spanish), meetings with municipal authorities, local migratory authorities (INM) and some International NGO present in the territories. **We also accompanied the visit of the United Nations Resident Coordinator.**



## IDENTIFIED NEEDS



### NUTRITION AND HEALTH

- Food kit
- Medical attention



### WATER, SANITATION AND HYGIENE

- Hygiene and prevention kit
- Toilet kit for shelters
- Hygiene promotion activities
- Water for consumption
- Drinking water for shelter
- Biosecurity kit
- Vector control in shelter



### HOUSING, ACCOMMODATION AND INFRASTRUCTURE

- Mattresses
- Improved physical facilities in the shelter
- Improved occupancy of shelter space
- Dining area
- Training on shelter management
- Improved solid waste management



### PROTECTION

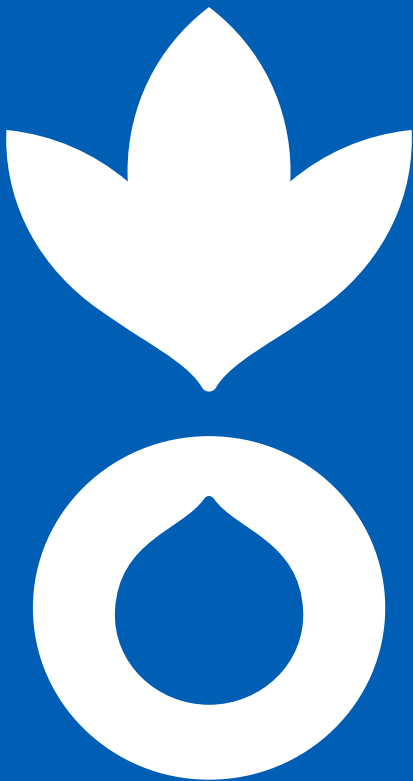
- Psychological care
- Reestablishment of contact with family members



# NEXT STEPS

**1** Fundraising for the response to this emergency

**2** Monitoring the evolution of the situation



For more information, please contact:



**Action Against Hunger Honduras Office**

María Luisa Sánchez - Operations Coordinator  
+504 93689392 | [masanchez@ca.acfspain.org](mailto:masanchez@ca.acfspain.org)



**Regional Office Central America**

Miguel Ángel García - Regional Director  
+505 84458953 | [mgarcia@ca.acfspain.org](mailto:mgarcia@ca.acfspain.org)



**Spain Central Office**

Benedetta Lettera - Head of Operations for Latin America  
+34 609 188 232 | [bletter@accioncontraelhambre.org](mailto:bletter@accioncontraelhambre.org)